



Vinyl Anaerobic Chamber Quick Start Guide

Coy Laboratory Products, Inc.

14500 Coy Drive
Grass Lake, Michigan 49240

(734) 475-2200
www.coylab.com

Copyright© 2020 by Coy Laboratory Products, Inc.

All rights reserved. The information in this manual is subject to change without notice and should not be construed as a commitment by Coy Laboratory Products, Inc. While every effort has been made to ensure the accuracy of the material, Coy Laboratory Products, Inc., assumes no responsibility or liability for any errors, inaccuracies, or omissions that may be present in this manual.

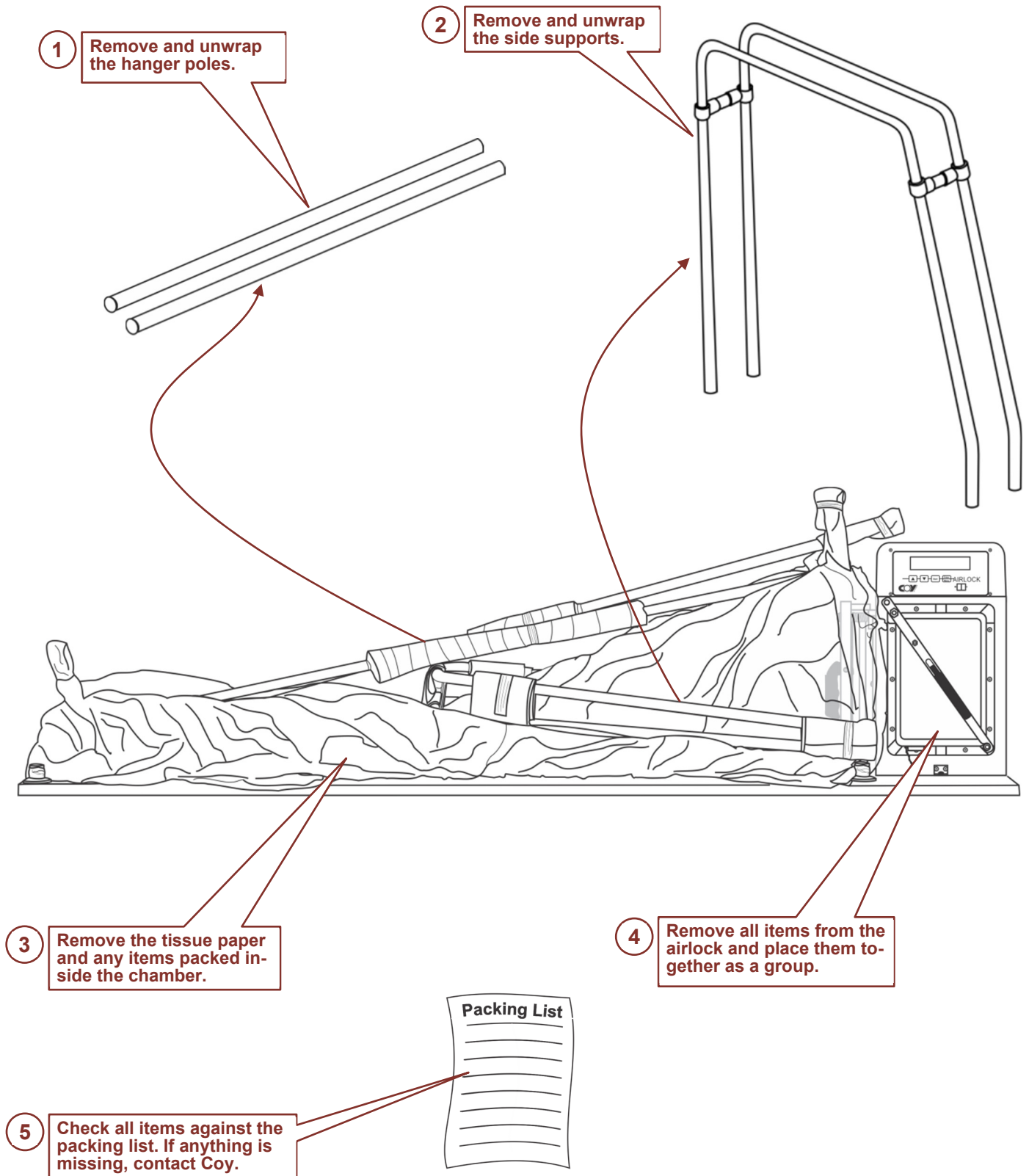
Document History

Part #	Manual Version	Product Version	Date
1200010	Vinyl Anaerobic Chamber Quick Start Guide 022820	Serial # AC20-001 –	Feb. 28, 2020

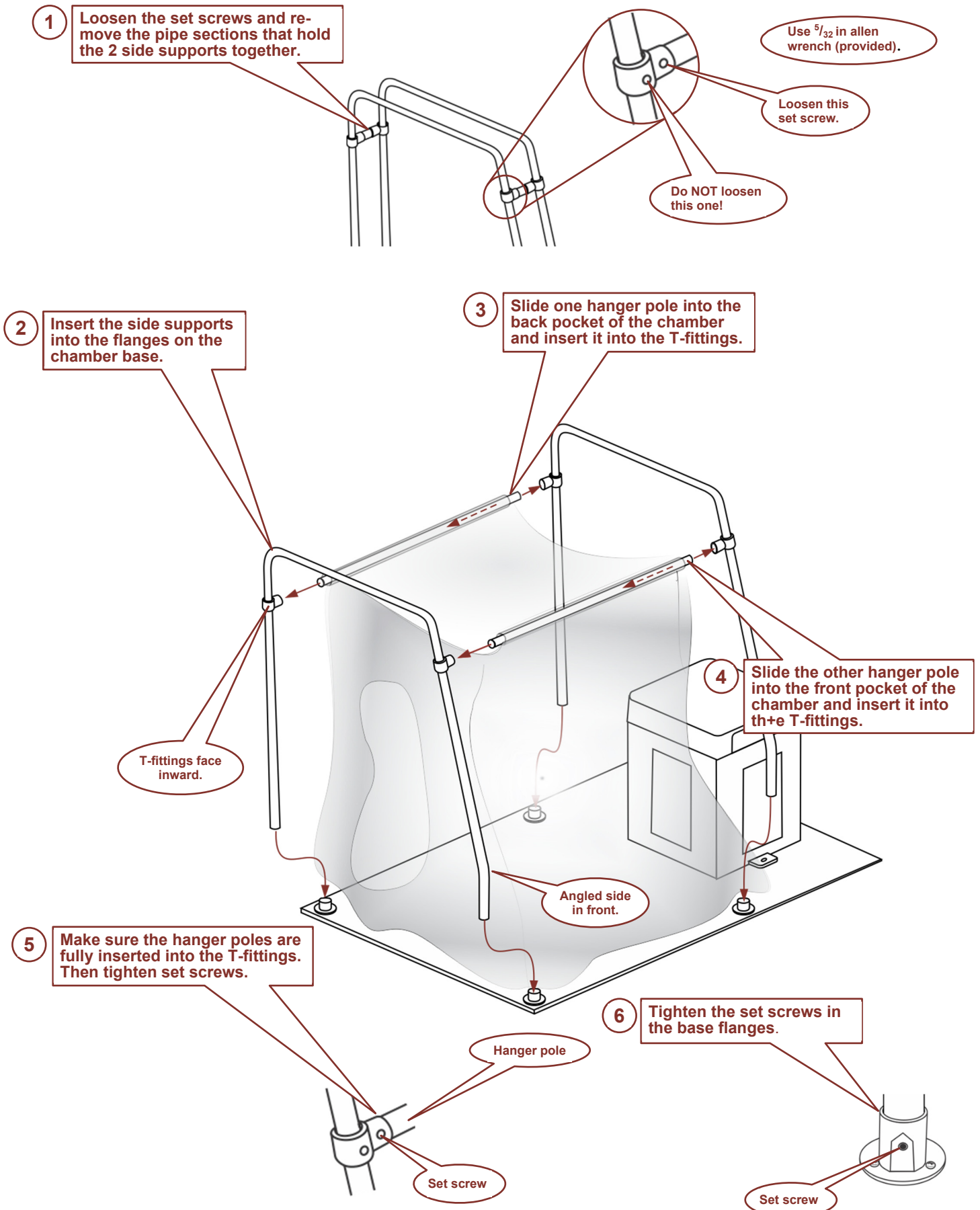
Important!

This quick start guide is designed to be used by persons who have some familiarity with the laboratory environment and equipment and do not need detailed setup instructions. It is not intended to be a substitute for the full Vinyl Anaerobic Chamber Setup Manual or Operation Manual. (See back page for download instructions.)

Step 1: Unpack the Chamber

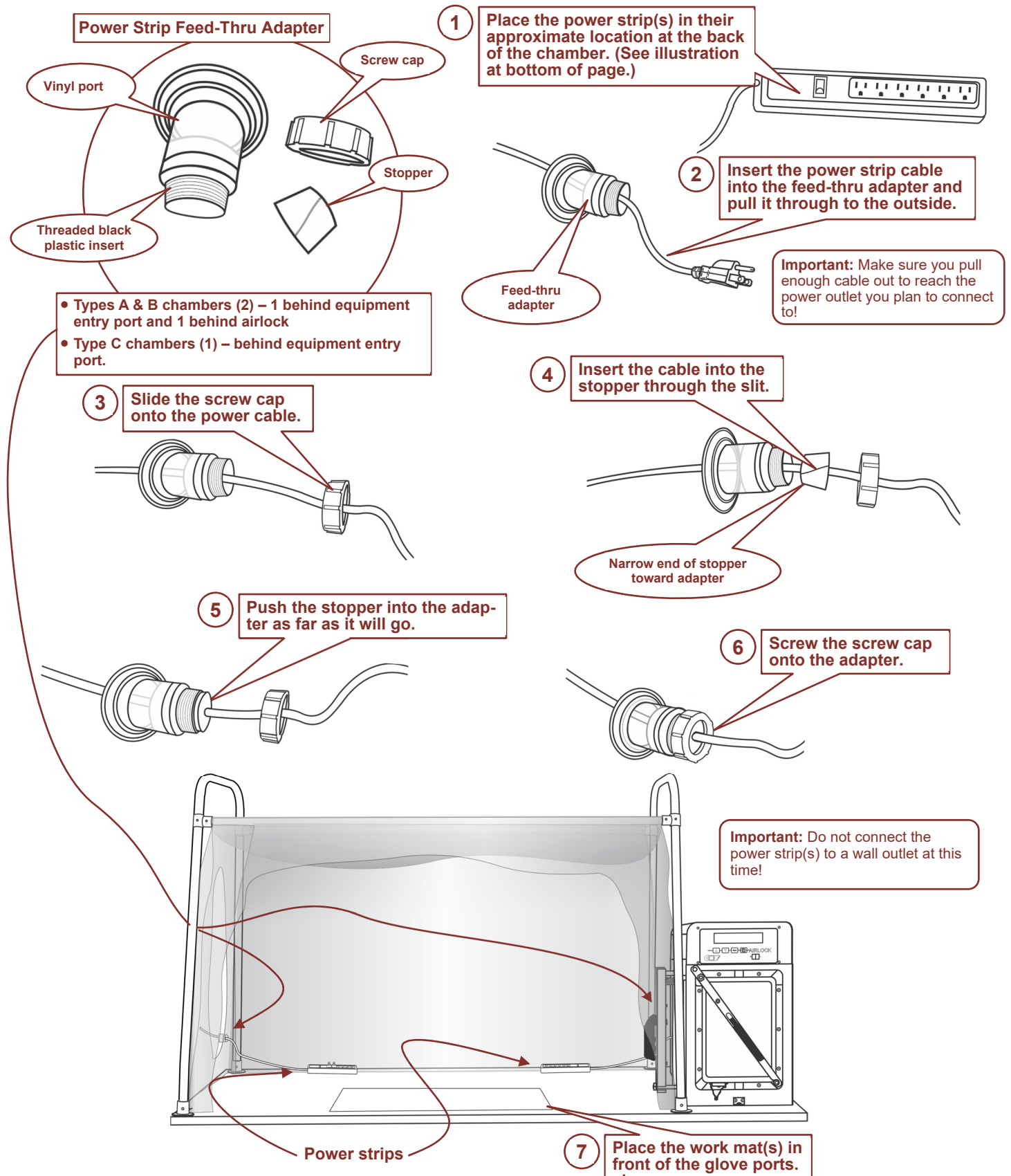


Step 2: Assemble the Frame



Step 3: Install the Power Strip(s) and the Work Mat(s)

Note: Types A and B chambers have two power strips. Type C chambers have one. Type B chambers have two work mats (one for each pair of gloves). A and C chambers have one.



Step 4: Install the “Back Wall” Components

Note: Most Type A chambers have either shelves or an incubator installed along the back wall of the chamber. Type B chambers can accommodate both. If you do not have either and do not have other equipment of your own that you wish to place there, skip to Step 5.

Important: If you have more than one item on the back wall, install the one furthest from the equipment entry port first!

To install the shelves:

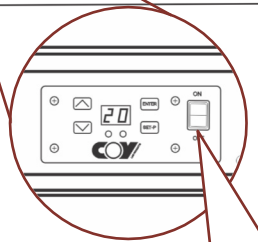
- 1 Assemble the shelves according to the included instructions.
- 2 Insert the shelves through the equipment entry port.
- 3 Place the shelves at the back of the chamber.

Equipment entry port

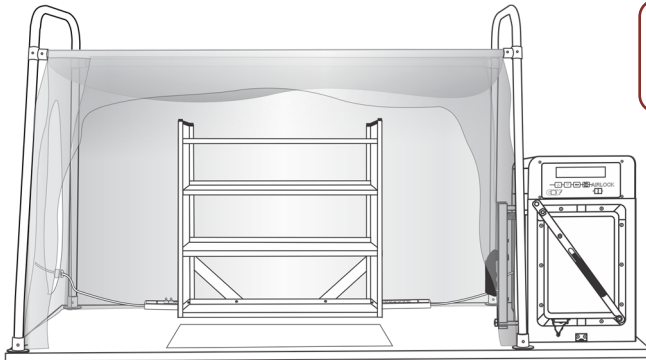
Type B Chamber

To install the incubator:

- 1 Insert the incubator through the equipment entry port.
- 2 Place the incubator at the back of the chamber.
- 3 Plug the incubator into the power strip.
- 4 Set the power switch to OFF.



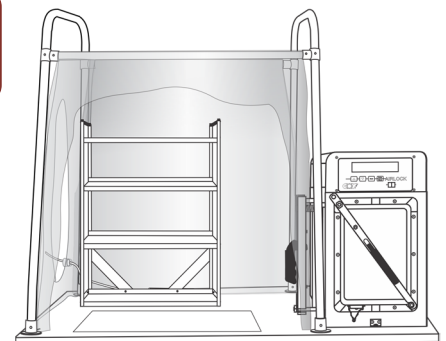
Type A Chamber



With 36 in shelves

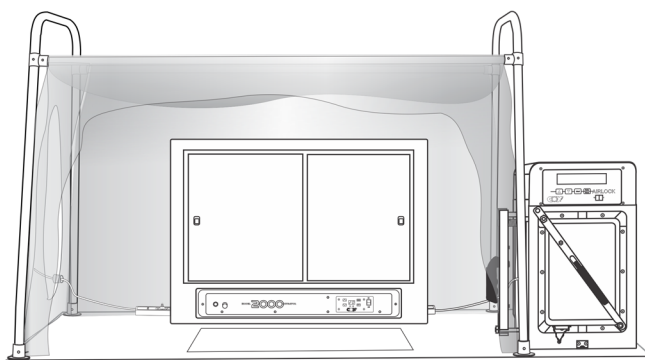
Note: You can also use the back wall space for your own equipment or other Coy equipment instead if you prefer.

Type C Chamber

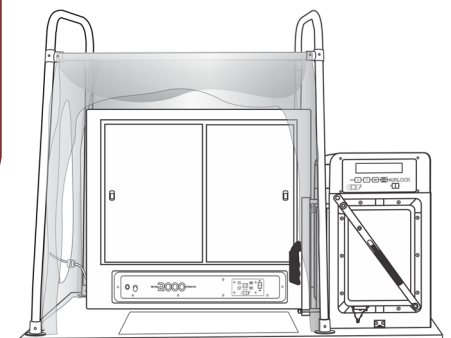


With 28 in shelves

Note: If you have a Type A chamber and want to have both shelves and an incubator, a 28 in shelf unit will fit in front of the equipment entry port. Install it after all other equipment is installed just before you seal the chamber (Step 8).



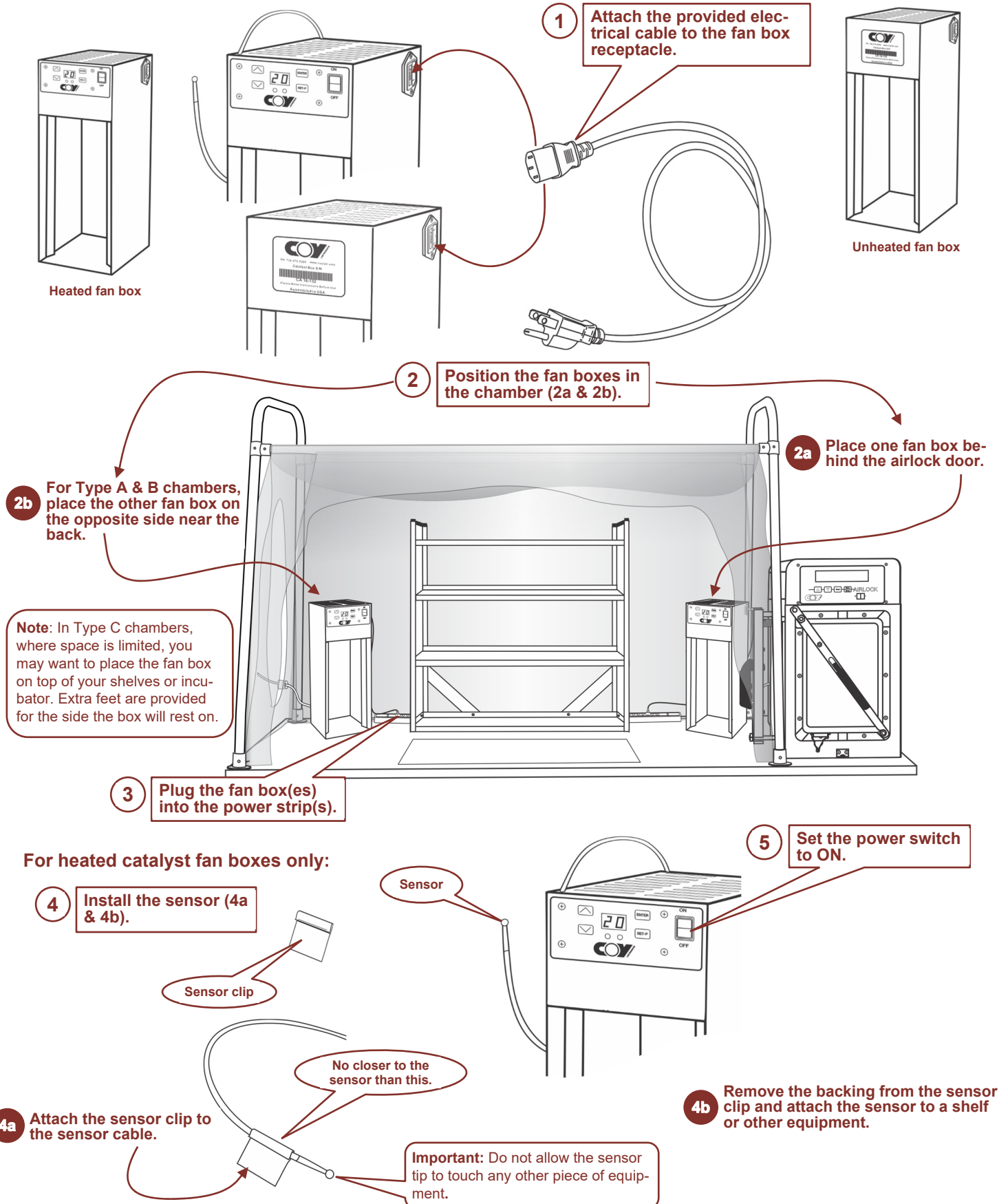
With incubator



With incubator

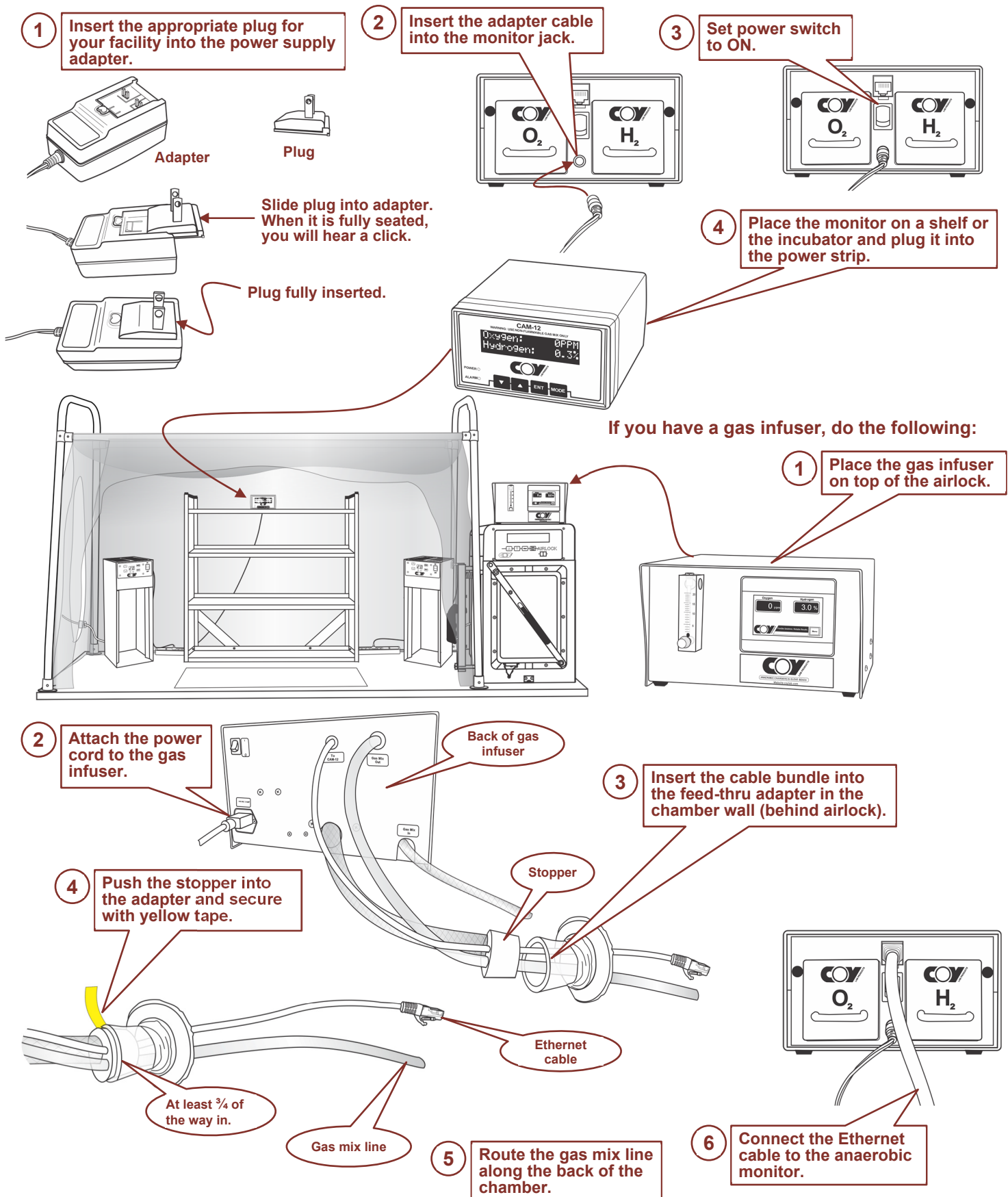
Step 5: Install the Catalyst Fan Boxes

Note: Types A and B chambers have 2 catalyst fan boxes. Type C chambers only have one.



Step 6: Install the Anaerobic Monitor and Gas Infuser

Note: If you do not have an anaerobic monitor, skip to Step 7.



Step 7: Install the HSRC

Note: If you do not have an HSRC, skip to Step 8.

1 Remove nuts from the column base.

2 Place the cartridge on the column base.

3 Secure the cartridge to the base with the nuts you removed.

4 Place the fan assembly on the cartridge top.

5 Rotate the clips inward to hold fan assembly in place.

6 Position the HSRC in the chamber (5a or 5b & 5c).

6a Place the unit on the chamber floor.

OR

6b Place the cradle on the top shelf:

AND

6c Place the HSRC in the cradle:

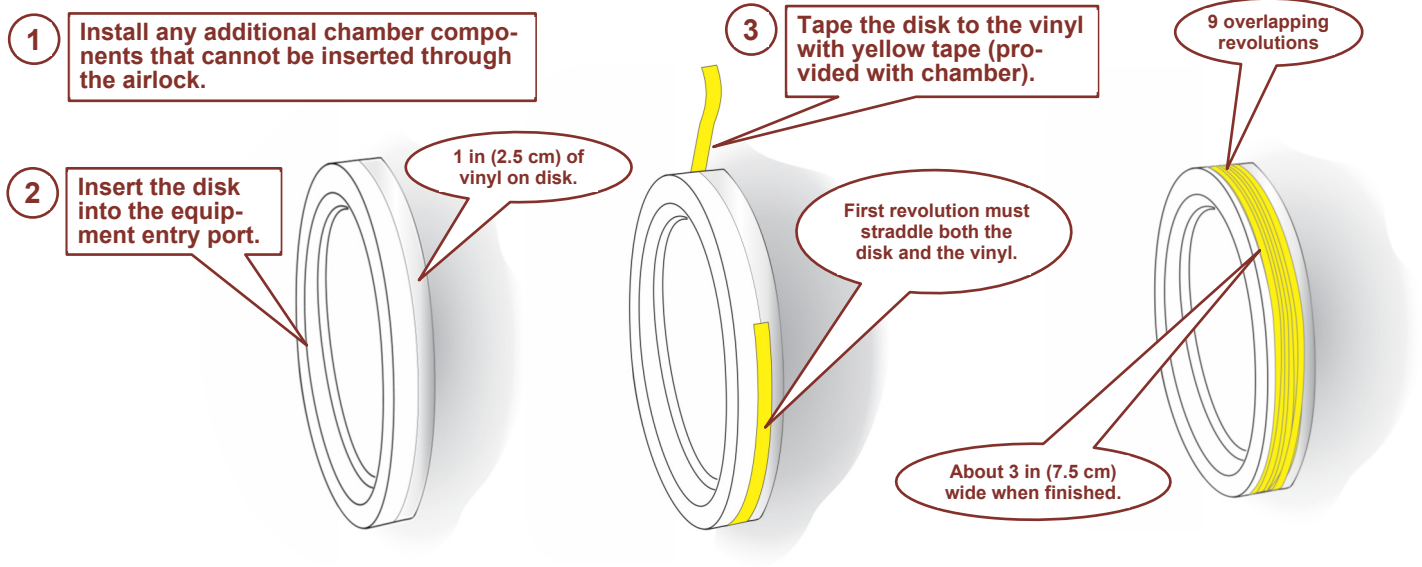
7 Plug the HSRC into the power strip. Do not turn the unit on at this point.

Note: If you place the HSRC on the top shelf, place the anaerobic monitor on the second shelf on the side closest to the airlock.

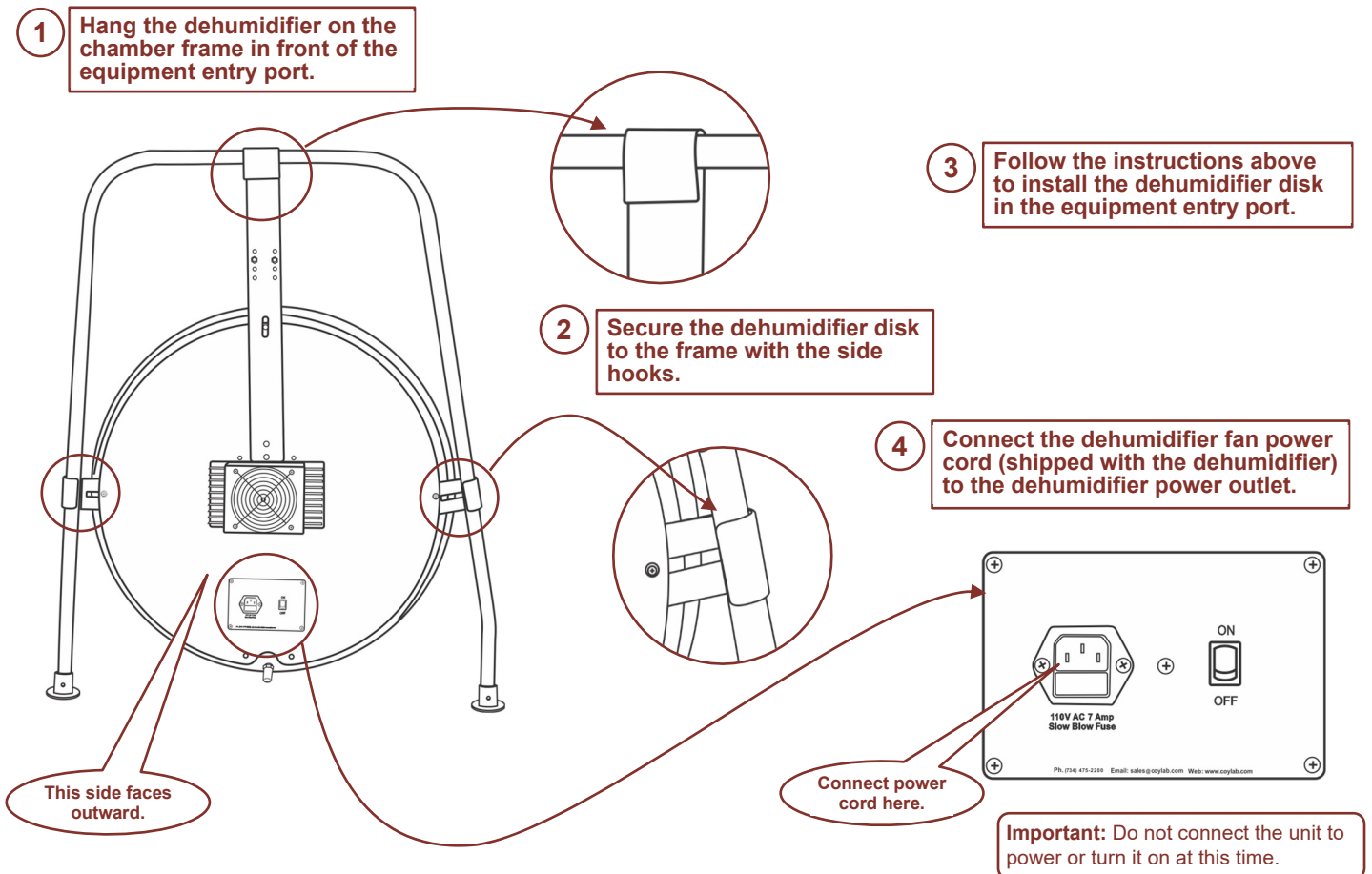
Step 8: Seal the Chamber

Note: Normally, the chamber is sealed with a plastic disk, which is installed in the equipment entry port. If you have purchased a large-capacity dehumidifier as part of your chamber equipment, the dehumidifier will take the place of the standard disk.

For standard installations:



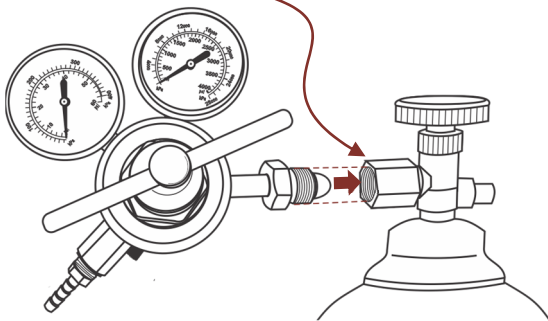
For installations with a large-capacity dehumidifier:



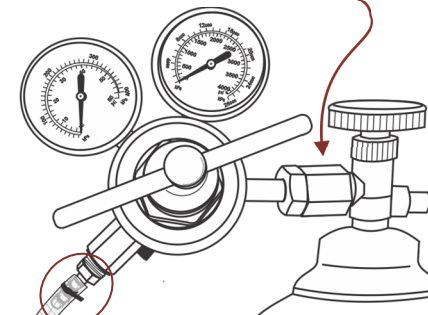
Step 9: Connect the Airlock to the Gas Supply

- 1 Attach the background gas regulator to the supply tank (1a & 1b).

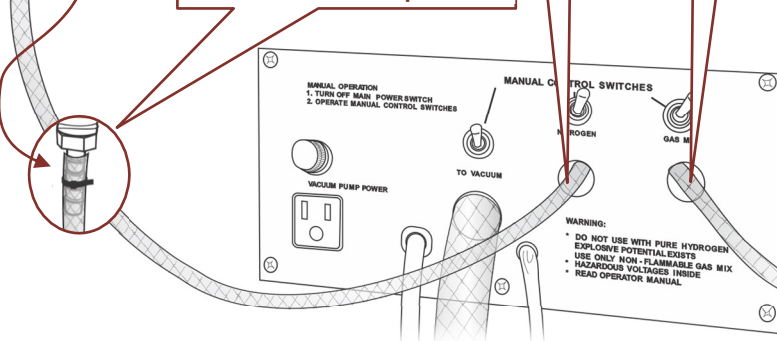
- 1a Insert the regulator fitting into the tank valve outlet.



- 1b Finger-tighten the nut. Then tighten it further with a crescent wrench.

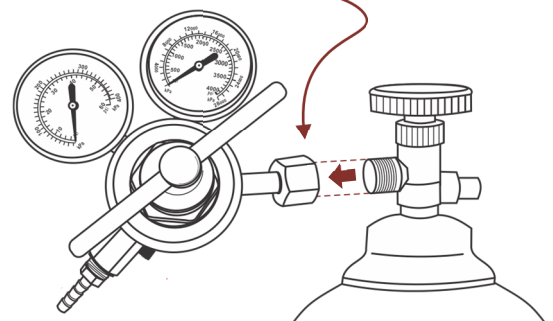


- 2 Slide the background gas line onto the hose barb and secure with tie-wrap.

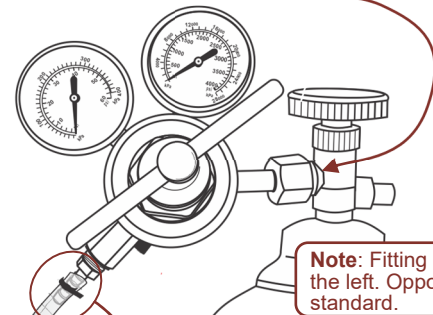


- 3 Attach the gas mix regulator to the supply tank (3a & 3b).

- 3a Insert the tank valve outlet into the regulator fitting.



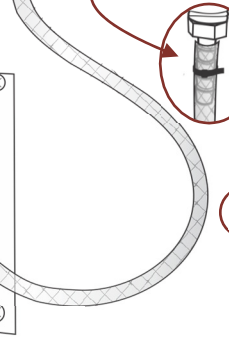
- 3b Finger-tighten the nut. Then tighten it further with a crescent wrench.



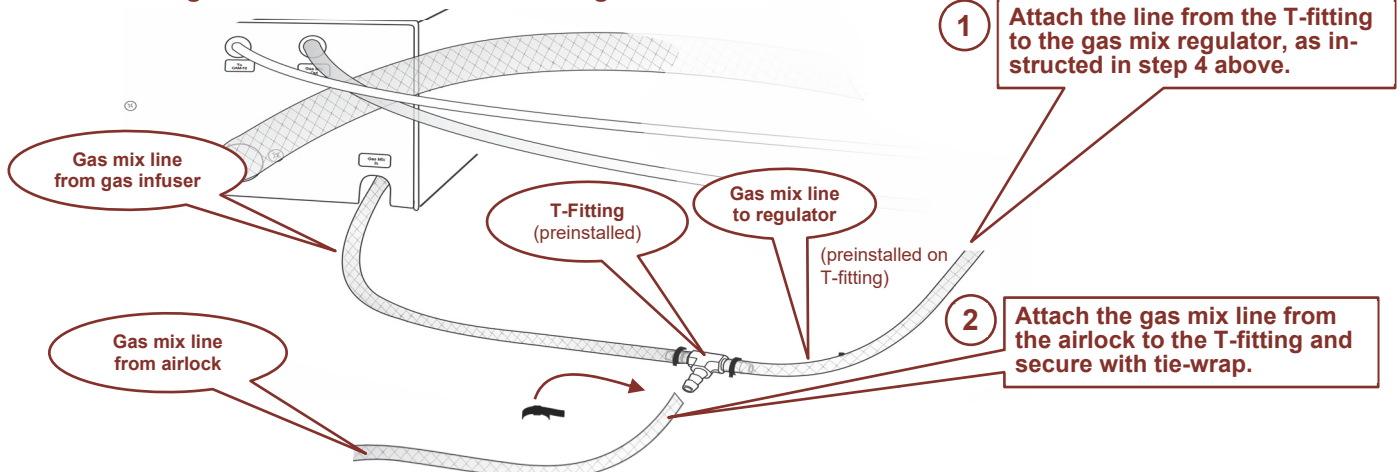
Note: Fitting turns to the left. Opposite of standard.

Important: If you have a gas infuser, follow the instructions below to install the gas mix line. If you do not, continue with step 4.

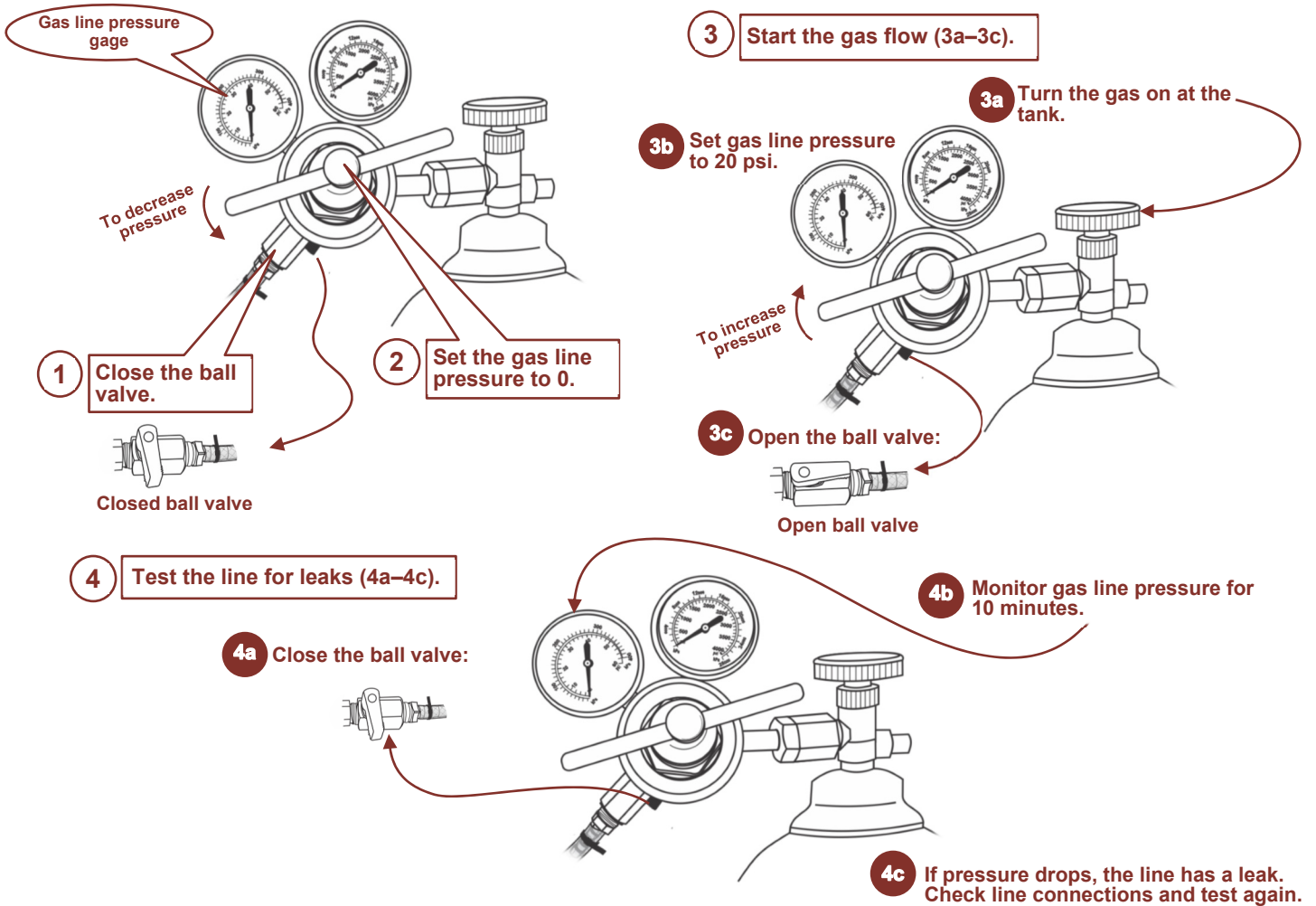
- 4 Slide the gas mix line onto the hose barb and secure with tie-wrap.



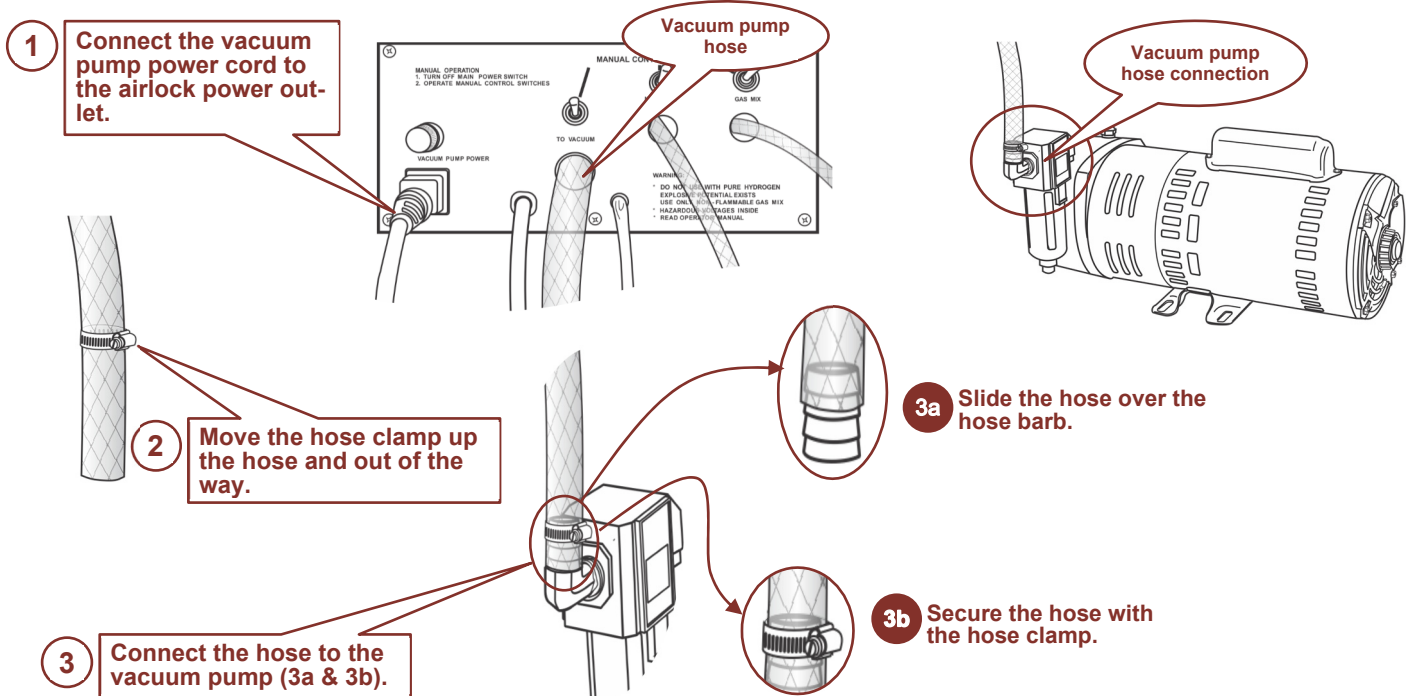
To install the gas mix line in chambers with a gas infuser:



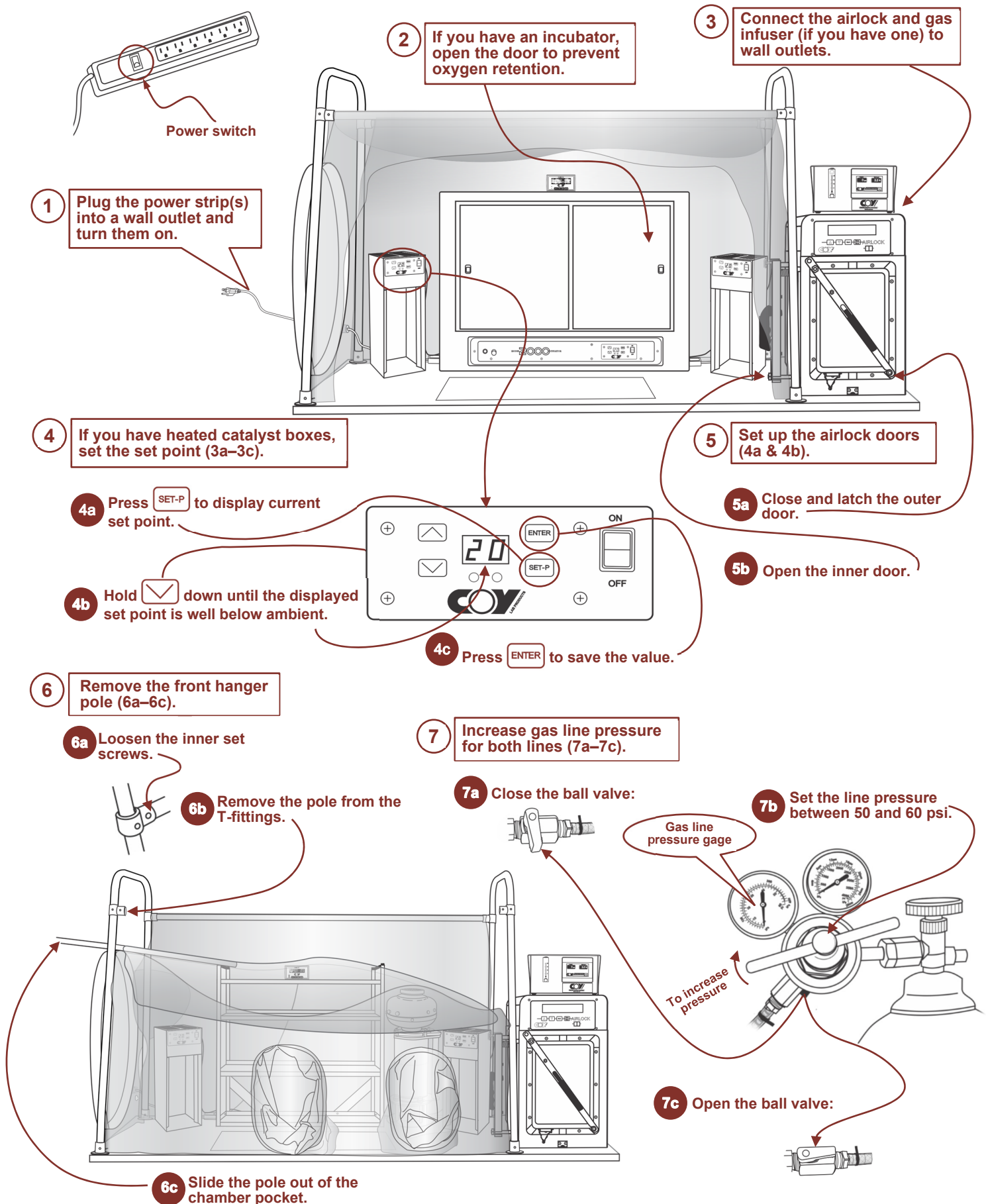
Step 10: Check Both Lines for Leaks



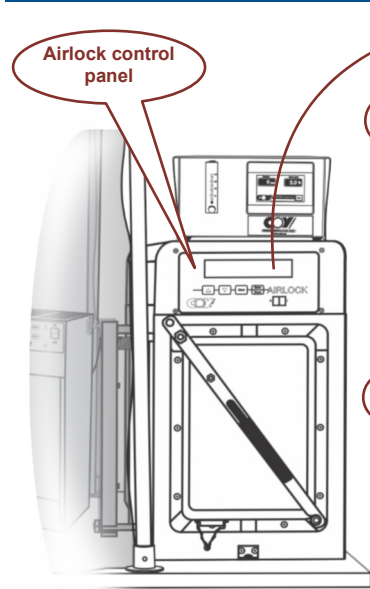
Step 11: Connect the Vacuum Pump



Step 12: Prepare the Chamber for Purging



Step 13: Purge the Chamber



Airlock control panel

1 Place the airlock in manual mode (1a–1c).

1a Turn the airlock on.

1b Press **Enter Menu** to display the menu.

1c Press **Start** to enter manual mode.

2 Perform a background gas purge (2a–2e).

2a Hold **▼** down to inflate the chamber with background gas.

2b When the sleeves stick out, release **▼**.

2c Open the airlock door to deflate the chamber.

2d When the chamber is collapsed, close and latch the door quickly.

2e Repeat steps 2a through 2d two more times.

3 If your chamber does not have a gas infuser, perform a gas mix purge (3a–3d).

3a Hold **Start** down to inflate the chamber with gas mix until the sleeves stick out.

3b Open the airlock door to deflate the chamber.

3c Close the door quickly when the chamber is collapsed.

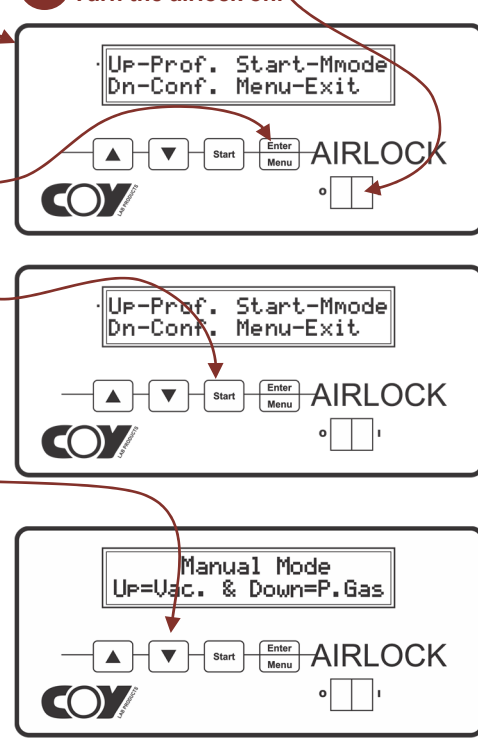
3d For chambers with an anaerobic monitor, repeat steps 3a through 3c until the hydrogen level is at 2.5 %. Otherwise, repeat 2 more times.

4 Reinsert the hanger pole (4a–4c).

4a Slide the pole into the chamber pocket.

4b Insert the pole into the T-fittings.

4c Tighten the set screws.



Up-Prof. Start-Mmode
Dn-Conf. Menu-Exit

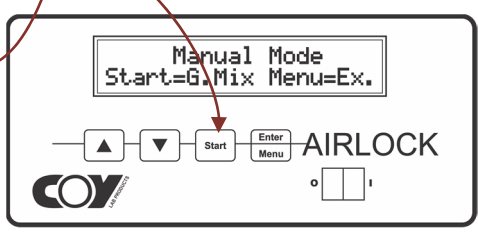
▲ ▼ Start Enter Menu AIRLOCK

Up-Prof. Start-Mmode
Dn-Conf. Menu-Exit

▲ ▼ Start Enter Menu AIRLOCK

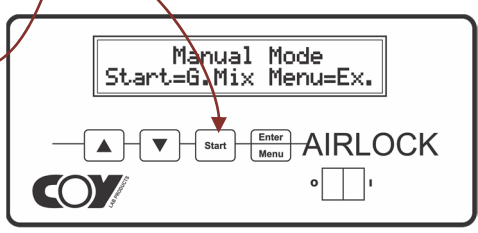
Manual Mode
Up=Vac. & Down=P.Gas

▲ ▼ Start Enter Menu AIRLOCK



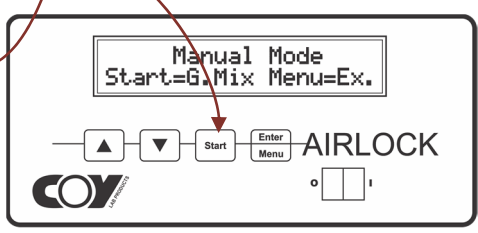
Manual Mode
Start=G.Mix Menu=Ex.

▲ ▼ Start Enter Menu AIRLOCK



Manual Mode
Start=G.Mix Menu=Ex.

▲ ▼ Start Enter Menu AIRLOCK



Manual Mode
Start=G.Mix Menu=Ex.

▲ ▼ Start Enter Menu AIRLOCK

Step 14: Prepare the Chamber for Operation

- 1 Press **Start** to reinflate the chamber with gas mix. Release the key when the top looks similar to this.

Important: Do not allow sleeves to stick out!

- 2 Reset the gas pressure to 20 psi for both lines.

Gas line pressure gage

To decrease pressure

- 3 Press **Enter Menu** to exit manual mode.

Manual Mode
Start=G.Mix Menu=Ex.

▲ ▼ Start Enter Menu **AIRLOCK**
COY

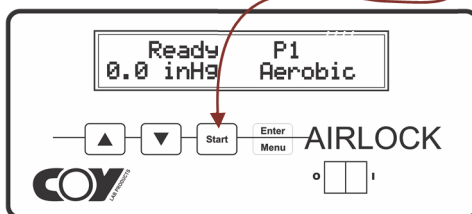
- 4 Place the catalyst Stak-Paks in the chamber (steps 4a–4e).

- 4a Close and latch the inner door.

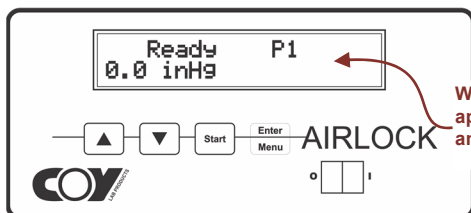
- 4b Open the outer door and place the Stak-Paks in the airlock:

- 4c Close and latch the outer door.

- 4d Press **Start** to start automatic operation.

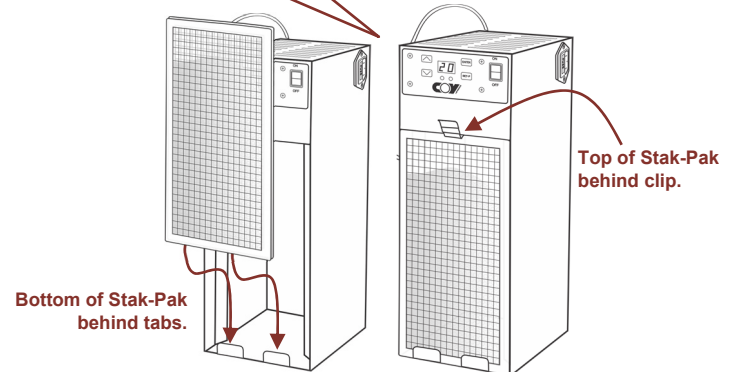


- 4e When the airlock is anaerobic, open the inner door and remove Stak-Paks.



When "Aerobic" disappears, the airlock is anaerobic.

- 5 Insert the Stak-Paks into the fan boxes.

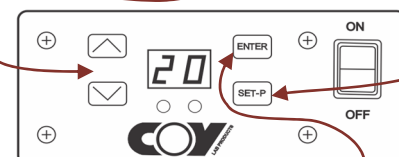


Note: If you also use desiccant Stak-Paks and need instructions, refer to Section 6.3.1 of the setup manual.

- 6 If your chamber has heated fan boxes, set the temperature set point (6a–6c).

- 6a Press **SET-P** to display current set point.

- 6b Use **▲** and **▼** to increase or decrease the value.



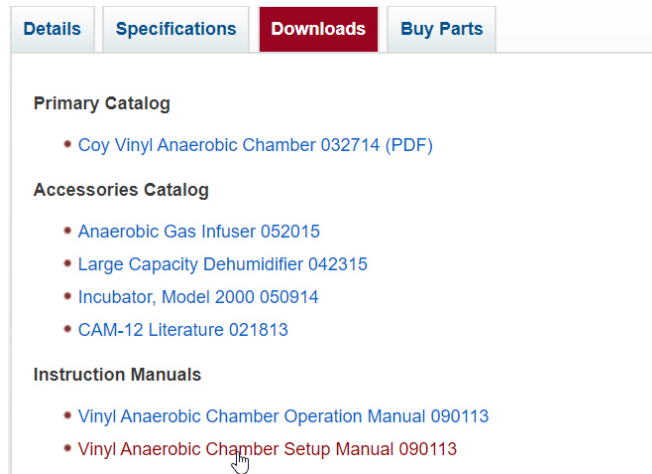
- 6c Press **ENTER** to save the value.

Your Next Step

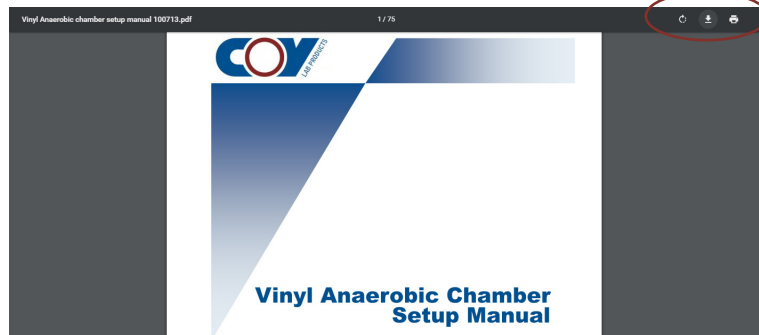
After you complete Step 14, your chamber is ready for operation. For instructions on startup operations for your chamber and the commonly used Coy equipment that we have included in the quick start guide, consult sections 6.5 through 6.9 of the setup manual. For other equipment, consult their respective product manuals.

To download the Vinyl Anaerobic Chamber Setup Manual —

1. Go to www.Coylab.com.
2. Click on **PRODUCTS** and select **Anaerobic Chambers** from the dropdown list.
3. Select **Vinyl Anaerobic Chambers** from the list on the left.
4. Click on the **Downloads** tab:



5. Select the setup manual and it will open in your browser:



6. Click the  button in the upper right corner to download the file.